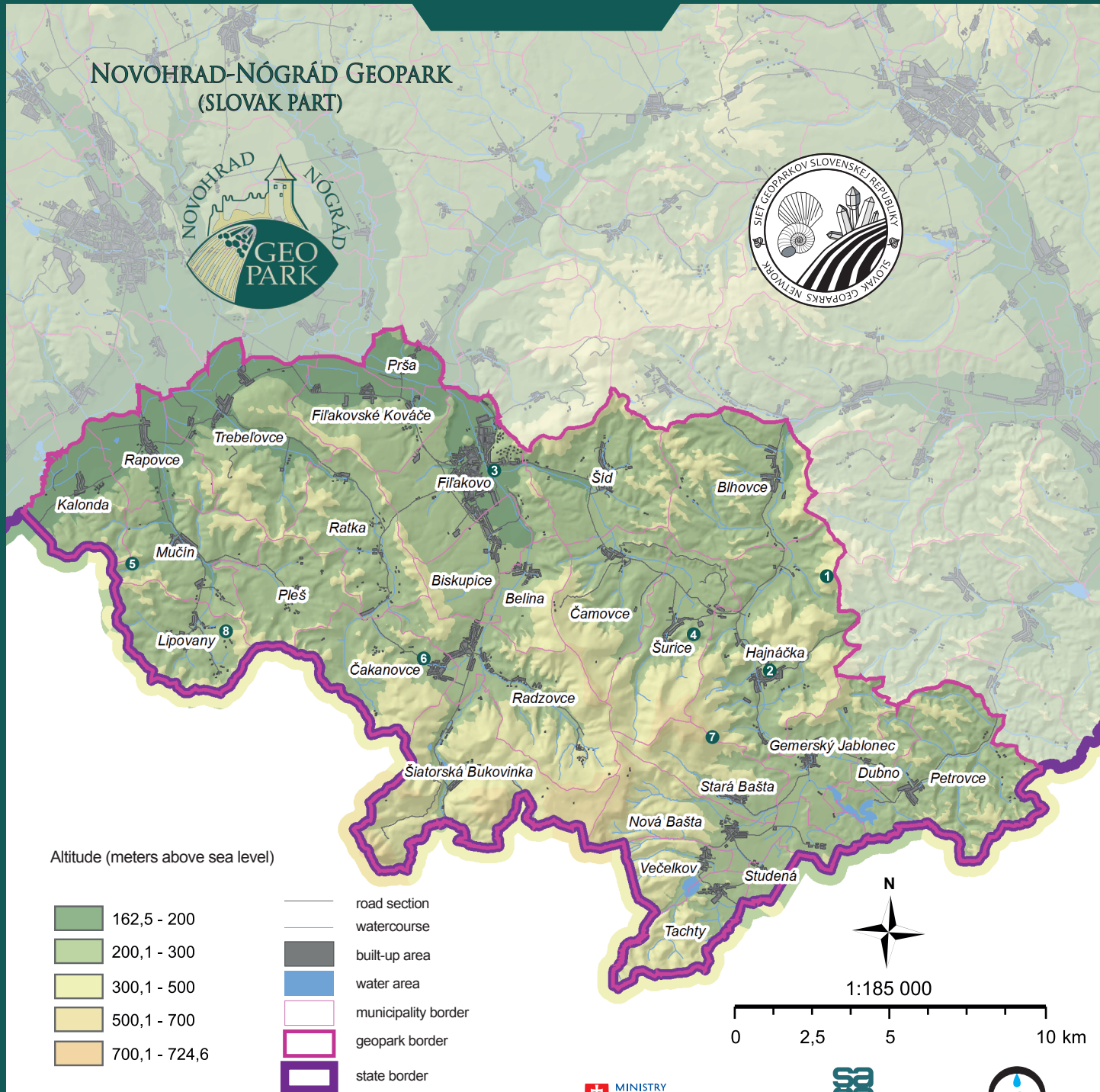
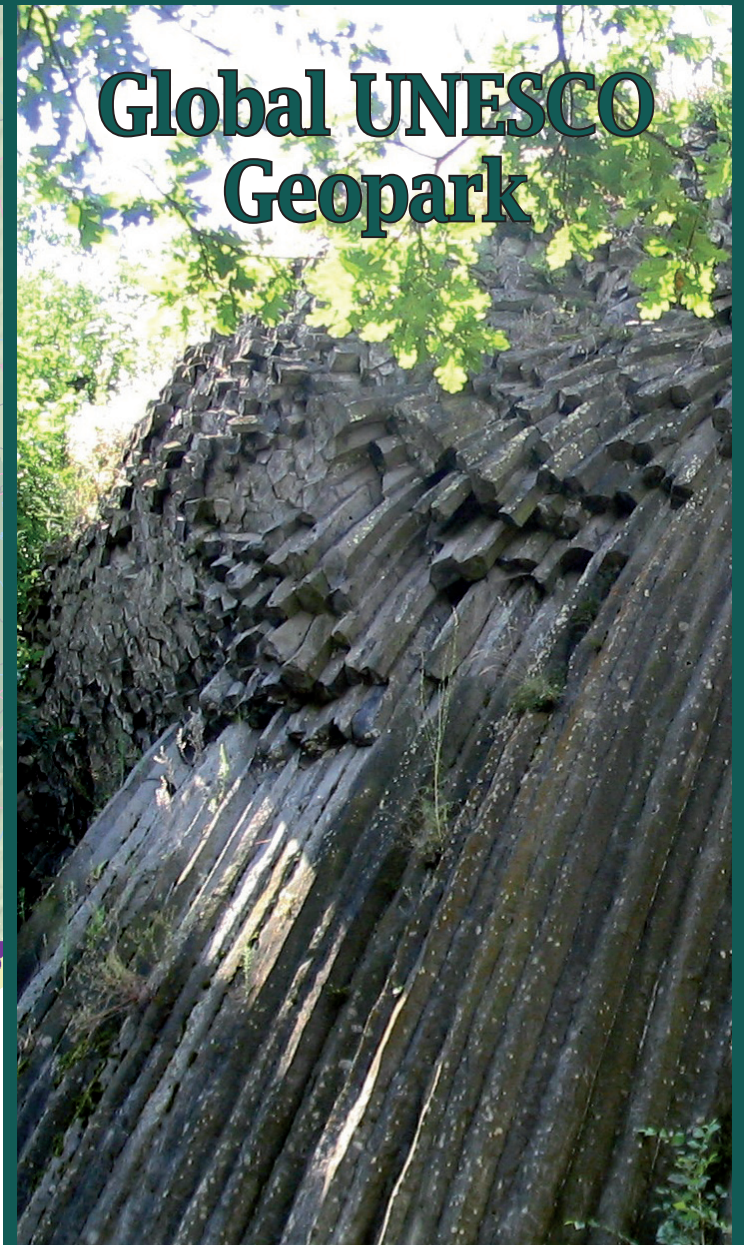


NOVOHRAD-NÓGRÁD GEOPARK (SLOVAK PART)



Global UNESCO Geopark



Novohrad- Nógrád



Novohrad-Nógrád Global UNESCO Geopark

On 27 March 2010 in Luberon, France, Novohrad-Nógrád Geopark was admitted by the UNESCO Steering Committee as the world's first international geopark, as the 38th member of the European Geoparks Network, and in April 2010 it was admitted at the World Geopark Network conference in Malaysia as its 67th member. Since 2016, the geopark has been established as the national geopark of the Slovak Republic, included in the Slovak Geoparks Network. **It spreads over an area of 1,619 km², of which 336 km² are in the territory of the Slovak Republic**, and it represents a territory rich in unique geological and natural values, cultural-historical heritage, folk traditions, modern

sites (15), cultural-historical (11), mining (3), archaeological (3), natural (2), recreational (1), mixed (18) geological and mining (9), geological and natural (6), geological, natural and archaeological (2), geological, natural, cultural-historical site (1) and the Protected Landscape Area of Cerová vrchovina, declared by Decree 113/1989 of the Ministry of Culture of the SSR. In the territory of Hungary, Novohrad-Nógrád geopark includes 64 municipalities with a total of 167 sites. Due to the relatively young geological age as well as the great variability, local volcanic structures are suitably usable not only for a scientific research but also for educational purposes for a wider range of stakeholders.

Association of Legal Entities, established in 2008. The association covers strategic, planning, development-educational and presentation activities within the UNESCO geopark. It is a part of cross-border management and participates in activities within international structures.

In the interest of sustainable development, the association actively cooperates with local self-government, primary, secondary and higher education institutions, professional and development organizations, civic associations and local entrepreneurs.



1 Photo panorama from Steblová rock

culture and gastronomy.

In Slovakia, the geopark is spread over the territory of the district of **Lučenec** (the town of Filákov and municipalities: Belina, Biskupice, Čakanovce, Čamovce, Filákovské Kováče, Lipovany, Kalonda, Mučín, Pleš, Prša, Radzovce, Rapovce, Ratka, Šiatorská Bukovinka, Šurice, Šíd, Trebeľovce) and **Rimavská Sobota** (municipalities: Blhovce, Dubno, Gemerský Jablonec, Hajnáčka, Nová Bašta, Petrovce, Stará Bašta, Studená, Tajchy, Večelkov), where a total of **53 sites are located**: geological




5 Mučinská cave



6 Čakanovský shape

CONTACTS

www.geopark.sk | www.nogradgeopark.eu

 Geopark
Novohrad-Nógrád, z.p.o.
Podhradská 1985/14
986 01 Filákov

 +421 917 646 551
 www.facebook.com/nngeopark
 geopark.filakovo@gmail.com
 48.271854, 19.824056



2 Castle of Hajnáčka



3 Castle of Filákov

The most important sites of Slovak part of geopark are: Castle of Filákov (National Cultural Monument), Šomoška (National Nature Reserve) with Šomoška castle, stone waterfall and stone sea, Pohanský castle (National Nature Reserve), Ragáč (National Nature Reserve), Castle mountain Hajnáčka (Nature Reserve), Steblová rock (Nature Reserve), Soví castle (Natural Monument) and many other geological, natural and cultural-historical sites.

Geopark construction is sponsored by the **Geopark Novohrad-Nógrád**



7 Pohanský castle



8 Lipoňany



4 Photo panorama of Soví castle